



Canadian Naval Task Group 301.0

MAPLESPRING

1969

JAN 7 — MAR 29, 1969

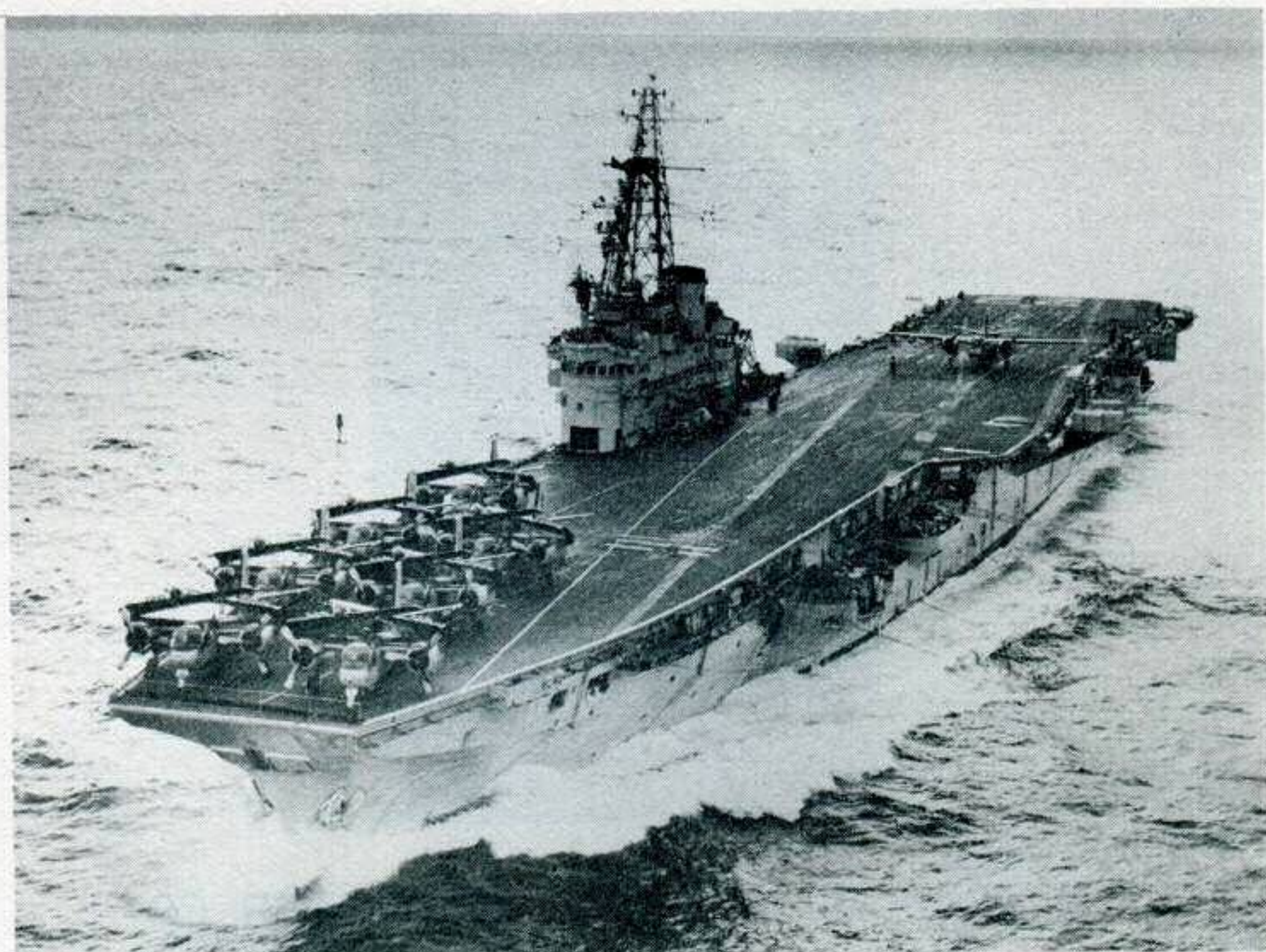


COMMODORE HENRY ALLEN PORTER, CD

I am very happy to have this opportunity to welcome you to the Canadian Task Group which consists of the aircraft carrier BONAVENTURE and her embarked aircraft squadrons, helicopter destroyers, destroyer escorts, maritime patrol aircraft, submarines, the operational support ship PROVIDER, the mobile repair ship CAPE SCOTT and other auxiliary ships and aircraft. You will find photographs and some details of these units in this pamphlet.

It is always a pleasure for members of the Canadian Maritime Force to visit our neighbours in the Caribbean and this is particularly so at this time of year: I know that all officers and men join me in hoping that you enjoy your visit to our task group. We are very pleased and proud to show you our ships and aircraft.

(H.A. PORTER)
COMMODORE



HMCS BONAVENTURE

The first aircraft carrier owned by the RCN, HMCS Bonaventure was built in Belfast, Ireland, and completed in 1957.

She is fitted with the latest navigation and aircraft handling equipment, including angled flight deck, steam catapults and mirror landing aids. The air component includes twin-engine CS2F Tracker anti-submarine aircraft and Sea King anti-submarine helicopters.

Displacement:	16,000 tons standard (20,000 tons full load)
Dimensions:	Length 704', beam (hull) 80', width 125' (overall), draught 25'.
Machinery:	Parsons single-reduction geared turbines, two shafts.
Speed:	25 knots.
Complement:	160 officers and 1100 men.
Guns:	Two twin 3-inch 50 calibre guns Four 6 pdr. saluting guns.



RESTIGOUCHE CLASS DESTROYER ESCORTS

The ships of this class are Canadian designed and constructed and are stationed on both Canada's East and West Coast.

HMCS TERRA NOVA is the lead ship in the modernisation of the class. She is fitted with more up to date anti-submarine equipment including ASROC, variable depth sonar and a digital computer. Ships of this class are:

<u>No.</u>	<u>Name</u>	<u>No.</u>	<u>Name</u>
DDE 235	Chaudiere	DDE 258	Kootenay
DDE 236	Gatineau	DDE 259	Terra Nova
DDE 257	Restigouche	DDE 260	Columbia
DDE 256	St. Croix		

Displacement:	2,366 tons (2,900 full load)
Dimensions:	Length 366', Beam 42', Mean draught 13.5'.
Machinery:	Geared turbines, 2 shafts.
Speed:	28 knots.
Complement:	11 officers and 198 men.
Armament:	One twin 3-inch 70 calibre mounting One twin 3-inch 50 calibre mounting Two triple-barrel anti-submarine mortars and homing torpedoes.



ANNAPOLIS CLASS HELICOPTER DESTROYERS

This class consists of HMC Ships NIPIGON (DDH 266) and ANNAPOLIS (DDH 265). Possessing the same general hull configuration as the preceding 18 destroyer escorts in the post war construction programme of the Royal Canadian Navy. These warships also have a hangar and flight deck for operation of anti-submarine helicopters, and are fitted with the Canadian variable depth sonar. Four sister ships of this class were completed as DDE's.

Dimensions:	Length 366', beam 42', mean draught 13'8''
Displacement:	2,925 tons (full load)
Speed:	28 knots approximately
Machinery:	Geared turbines; 30,000 S.H.P.
Boilers:	2 water tube
Crew:	11 officers 194 men
Armament:	Twin 3-inch gun mounting, triple-barrel ASW mortar, homing torpedoes.

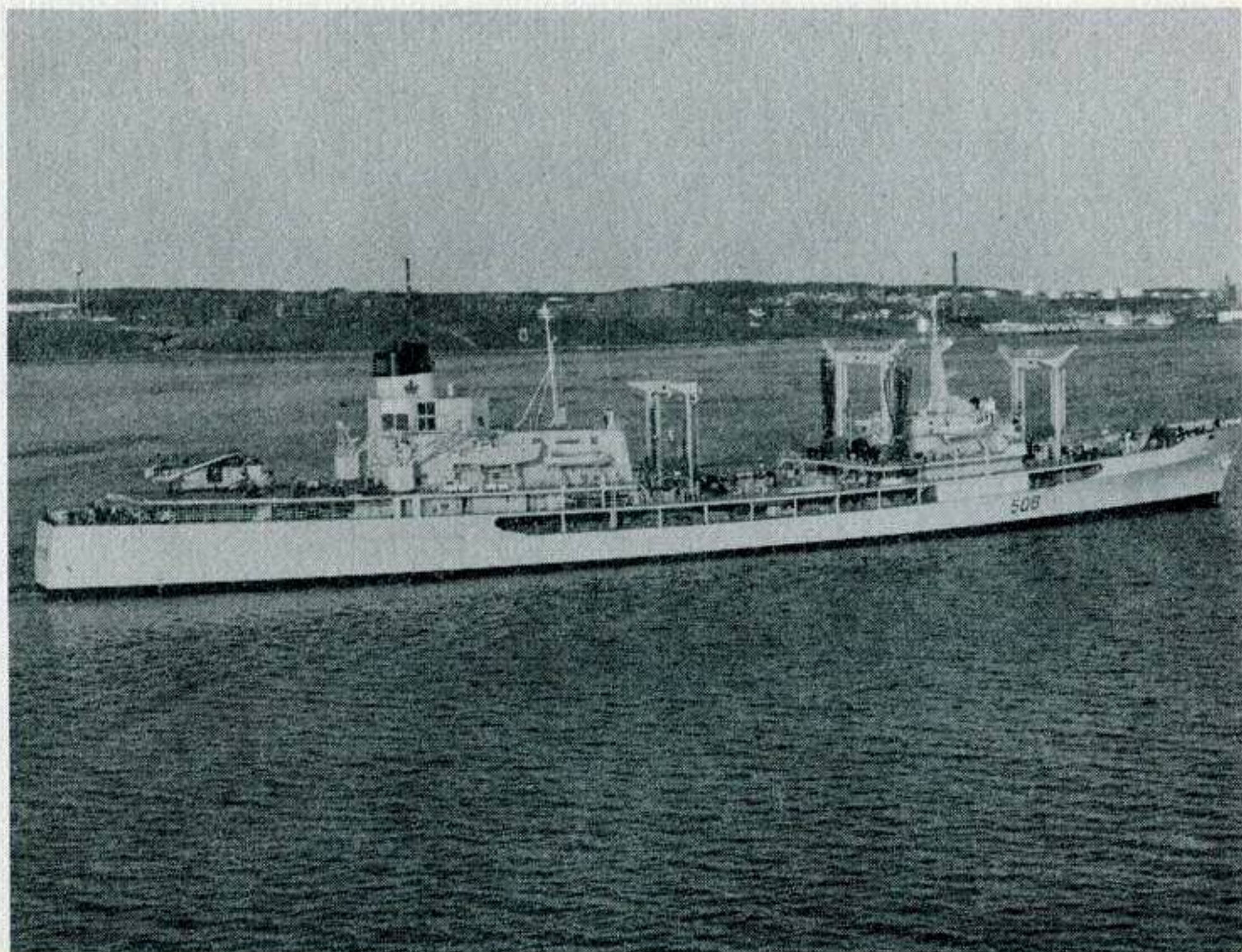


ST. LAURENT CLASS HELICOPTER DESTROYER

The St. Laurent class conversion programme entailed fitting the seven ships of the class with variable depth sonar and helicopter landing decks and hangars along with a number of other improvements.

Ships of this class are: HMCS ASSINIBOINE, (DDH 234) HMCS ST. LAURENT, (DDH 205) HMCS SAGUENAY, (DDH 206) HMCS OTTAWA, (DDH 229) HMCS SKEENA, (DDH 207) HMCS MARGAREE, (DDH 230) HMCS FRASER (DDH 233).

Displacement:	2,263 tons (2,800 full load)
Dimensions:	Length 366', beam 42', mean draught 13'2''
Machinery:	Geared turbines. Two shafts.
Speed:	28.5 knots.
Boilers:	2 water tube.
Complement:	11 officers, 198 men.
Armament:	Twin 3-inch guns, triple-barrel anti-submarine mortars, homing torpedoes.



FLEET REPLENISHMENT SHIP

HMCS Provider was built at Lauzon, Quebec, and commissioned for service on 28 September 1963.

The Provider, with her facilities for furnishing mobile support, enables units of the fleet to operate for extended periods at sea. She can pump fuel oil to other ships at a rate of 1,500 tons per hour while steaming at speeds in excess of 18 knots.

She is equipped with the latest sonar, radio and navigational equipment; with electro-hydraulic deck winches; a helicopter landing platform hangar and repair facilities and modern upper deck fuelling arrangements. She has 26 cargo tanks which hold 12,000 tons of fuel oil, 1,200 tons of diesel fuel and 1,000 tons of aviation gasoline plus storage for spare parts, ammunition and 250 tons of food.

PROVIDER will soon be joined by her more sophisticated sister ships HMCS PROTECTEUR and HMCS PRESERVER.

Displacement:	22,000 tons (full load).
Dimensions:	Length 551', beam 76', draught 30'.
Machinery:	Single screw, steam turbine.
Boilers:	Water tube, automatically controlled.
Range:	5,000 miles at 20 knots.
Crew:	15 officers and 156 men.



ESCORT MAINTENANCE SHIP

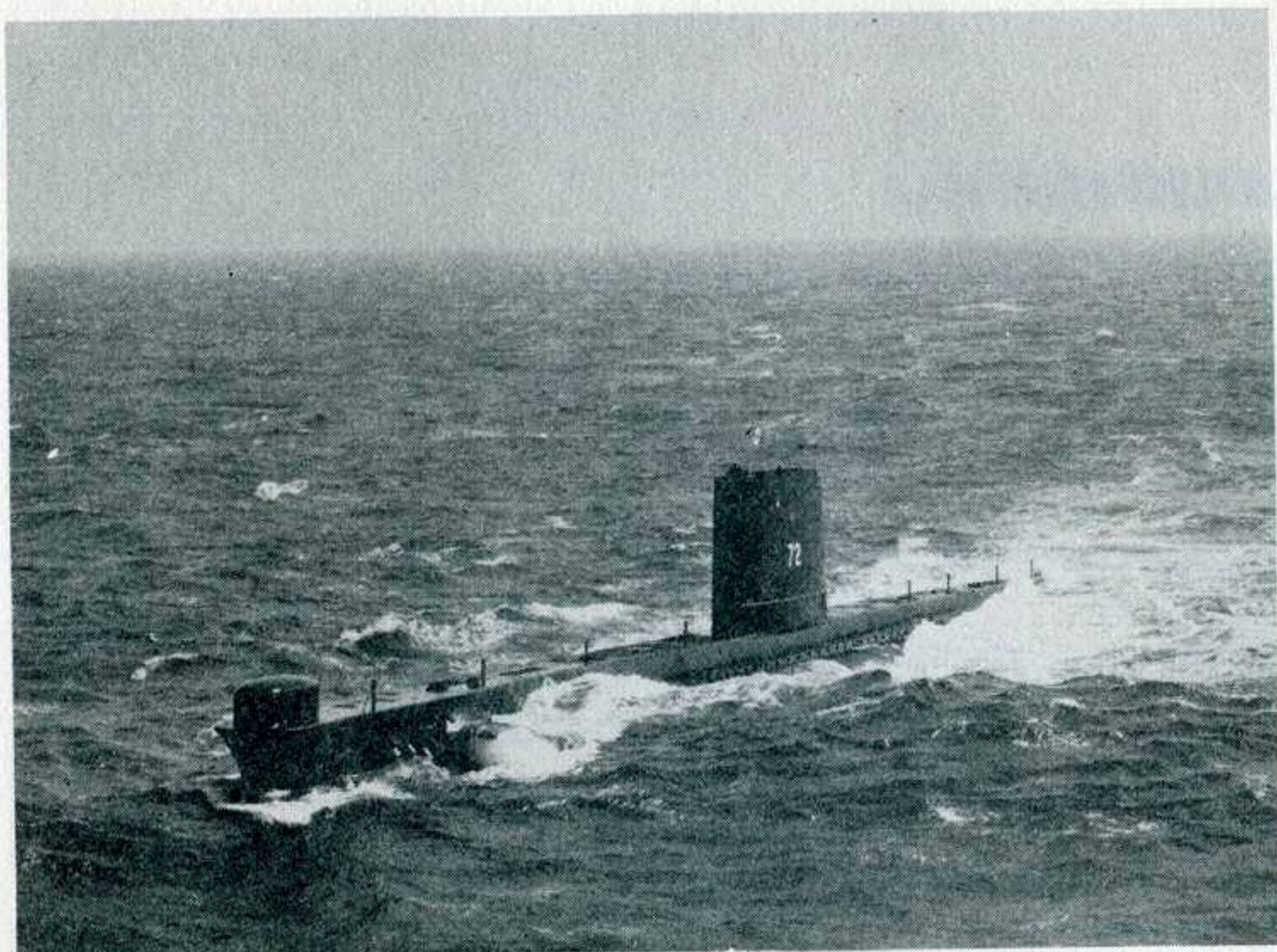
One "Cape" class escort maintenance ship, HMCS Cape Scott, is in commission on the Atlantic Coast. She was built in Vancouver in 1944 for the Royal Navy and subsequently turned over to the RCN. This ship has been converted and equipped to carry out maintenance and repairs to support the fleet at sea.

Displacement:	8,580 tons (11,270 full load).
Dimensions:	Length 441', beam 57', draught 20'.
Machinery:	Triple expansion, 1 shaft.
Speed:	11 knots.
Boilers:	2 Foster Wheeler.
Complement:	24 officers and 251 men.

UNIT PARTICIPATION IN MAPLESPRING 1969

Officer in Tactical Command: Commodore H.A. Porter, Senior Canadian Officer Afloat

<u>Number</u>	<u>Name</u>	<u>Commanding Officer</u>	<u>Type</u>
CVS 22	HMCS Bonaventure	Captain R.H. Falls	Aircraft Carrier
	VS 880 Detachment	Commander R.L. Hughes	CS2F-3 Tracker
	HS 50 Detachment	Commander J.D. Hewer	CHSS-2 Sea King
	HU 21 Detachment	Lieutenant-Commander G.E. Watson	HO 4 S 3 Horse
AOR 508	HMCS Provider	Captain W.J. Stuart	Operational Support Ship
ARE 101	HMCS Cape Scott	Lieutenant-Commander F.J. Copas	Mobile Repair Ship
<u>Third Canadian Escort Squadron</u>		Captain R.W. Cocks	
DDH 265	HMCS Annapolis	Commander D. Ross	Helicopter Destroyer
DDH 207	HMCS Skeena	Commander W.G. Brown	Helicopter Destroyer
DDE 257	HMCS Restigouche	Commander P.L. McCullough	Destroyer Escort
<u>Fifth Canadian Escort Squadron</u>		Captain C.G. Pratt	
DDH 233	HMCS Fraser	Commander F.W. Crickard	Helicopter Destroyer
DDH 205	HMCS St. Laurent	Commander M. Barrow	Helicopter Destroyer
DDE 236	HMCS Gatineau	Commander W.A. Hughes	Destroyer Escort
DDE 259	HMCS Terra Nova	Commander J.M. Reid	Destroyer Escort
<u>Seventh Canadian Escort Squadron</u>		Captain R. Carlé	
DDH 234	HMCS Assiniboine	Commander G.L. Edwards	Helicopter Destroyer
DDH 229	HMCS Ottawa	Commander P.E. Simard	Helicopter Destroyer
<u>First Canadian Submarine Squadron</u>		Commander G. Gigg	
SS 72	HMCS Onondaga	Lieutenant-Commander L.G. Temple	Attack Submarine
SS 74	HMCS Okanagan	Lieutenant-Commander N.H. Frawley	Attack Submarine
404 VP Squadron		Lieutenant-Colonel D.H. Souchen	Argus Maritime Patrol Aircraft
405 VP Squadron		Lieutenant-Colonel A. McLellan	Argus Maritime Patrol Aircraft
415 VP Squadron		Lieutenant-Colonel R.F. Johnson	Argus Maritime Patrol Aircraft
<u>Support Units</u>			
AGOR 114	CNAV Bluethroat	Master: R. Dominie	Fleet Support Vessel
ATR 533	CNAV St. Charles	Master: W. May	Ocean Tug
VU 32 Detachment		Commander R.A. Lyons	T 33 Utility Aircraft and COD
Canadian Forces Support Unit		Major J.A. Robertson	



"O" CLASS SUBMARINES

The three "O" class submarines of the Canadian Armed Forces are British built Oberon class; the latest conventional type submarines being built.

The Oberon class submarines are fitted with modern detection equipment, armed with homing torpedoes, capable of high underwater speeds and are able to maintain continuous submerged patrols in any part of the world.

Submarines of this class are:

SS 72 HMCS OJIBWA

SS 73 HMCS ONONDAGA

SS 74 HMCS OKANAGAN

Displacement: 1,610 tons standard;
2,410 submerged;
2,030 surfaced.

Dimensions: Length 295 $\frac{1}{4}$ ',
beam 26 $\frac{1}{2}$ ',
draught 18'.

Armament: Eight 21-inch tubes for homing torpedoes.

Machinery: Admiralty standard range electric drive
diesels.

Cr w: 68 (six officers, 62 men).



CS2F-3 TRACKER ANTI-SUBMARINE AIRCRAFT

Originally built by DeHavilland (Toronto), the Tracker is an all-weather, twin-engine aircraft equipped with latest electronic devices for navigation and detection of submarines. This aircraft was recently modified to the CS2F-3 by Fairey Canada Ltd., (Dartmouth), and carries depth bombs, torpedoes and rockets.

Crew:	Four
Endurance:	6.0 hours or 900 miles (normal) 8.0 hours or 1200 miles (long range extra tank)
Speed:	Search speed 140 knots, maximum 224 knots
All-Up Weight:	25,500 lbs.
Dimensions:	69' wing span, 42' length
Engines:	2 Wright 983C9HE1 nine cylinder air cooled radial, single speed supercharge.
Equipment:	Radar, sonobuoys, magnetic anomaly detector (MAD), Julie, Jezebel, Jezebel relay, search-light and electronic counter measures equipment.



CHSS-2 (Sea King) ANTI-SUBMARINE HELICOPTER

An outstanding feature of the Sea King helicopter is its all-weather, day-and-night capability. Other characteristics include an automatic tail-folding device, winch-down equipment, hull-shaped fuselage, high speed and an automatic hovering capacity. It is equipped with detection, navigation and weapons systems which enable it to search for, locate and destroy any modern submarine.

Crew:	4 (two pilots, two sonarmen)
ASW Endurance:	4 hours or 500 miles
Speed:	120 knots (cruising)
Gross Weight:	19,000 lbs. max
Dimensions:	Fuselage length 54'9", width 7'1", height over-all 16'8"
Engines:	2 General Electric T-58-GE-8B twin turbines
Detection Equipment:	Sonar-ranging set and self-contained navigation system.
Armament:	Homing torpedoes and depth bombs.

With the anti-submarine warfare equipment removed, the CHSS-2 can transport up to 25 troops internally or up to 4,000 lbs. externally.



SIKORSKY (HO4S-3) HELICOPTER

This versatile aircraft is used by the RCN primarily for helicopter advanced training. The helicopter is also used for search and rescue and fleet requirements including communications flights, torpedo spotting, photography and radar calibration. Hundreds of rescue and mercy missions have been flown by this type of helicopter since its introduction into the RCN in 1952. It will shortly be replaced by the IROQUOIS.

Crew: 4 (2 pilots and 2 crewmen)

Endurance: 3½ hours or 300 miles

Speed: 85 knots (cruising)

Max. Gross Weight: 7,750 lbs.

Dimensions (blades folded): Length 42', height 13'4'', width 11'6''

Engine: Wright R-1300 9 cylinder.



CL28 ARGUS

Built by Canadair, the "Argus" is one of the best land based anti-submarine aircraft in operation in the world today. Specifically designed to fulfill the ASW role, the aircraft is capable of long periods of ocean patrol duty — accommodating the latest Maritime surface and subsurface detection equipment — tactical co-ordination with Naval surface craft on defensive and offensive maneuvers — convoying and search-rescue operations.

Crew:	15 (3 pilots, 3 navigators, 2 flight engineers, 7 radio operators)
Endurance:	20 hours (normal operation) — Record time airborne — 30 hours.
Speed:	200 knots (cruising)
Gross Weight:	157,000 lbs.
Dimensions:	Fuselage length 128'9½", wing span 142'3½", height 38'8"
Engines:	Four 3,700 h.p. Wright Cyclone R3350EA1 turbo compound engines.
Armament:	Approximately 8,000 lbs. in two bomb bays. Missiles, rockets, depth charges, mines, bombs, photo flashbombs and practice bombs can be carried.



T-33 SILVER STAR

The T-33 Silver Star is a two-place jet aircraft used by the RCN primarily for the towing of radar reflecting targets. These targets are used by the gunnery range at Osborne Head and ships at sea for gunnery practice. The aircraft is also used for radar tracking for ships' work ups and calibration of radar and fleet utility work.

Crew:	1 pilot and 1 crewman
Endurance:	3½ hours or 1,400 miles
Speed:	400 knots (cruising)
Max. Gross Weight:	16,000 lbs.
Dimensions:	Length 36', Wing Span 38', Height 14'
Engine:	Rolls Royce "Nene" 5,100 lbs. thrust.



CNAV SAINT CHARLES

Displacement, tons

840 Full Load

Dimensions

Length 151 ft.

Breadth 33 ft.

Draft 17 ft.

Main Engines Diesel

1 Shaft 1920 BHP

14 knots

Built in 1957 with two other Ocean Tugs, Saint John and Saint Anthony. In addition to support duties as an Ocean Tug Saint Charles is also used for target towing duties.

